



Food Waste Incline Conveying System

General Description of the Application

Converted Organics™ produces all-natural fertilizers, bio-stimulants and soil amendment products by processing recycled food wastes. These products are used in place of chemical fertilizers to grow healthy crops. Food waste in the form of fruits and vegetables are delivered to the Converted Organics processing facility. The waste fruits and vegetables are checked for metals on a horizontal belt conveyor and then loaded into an inclined tubular screw conveyor to be fed into a macerator tank. The inclined screw conveyor provides a very efficient, totally enclosed solution since the fruits and vegetables have a tendency to roll around and leave behind residue, particles, and juices.

Design Parameters of Application

Product Type: Waste Fruits and Vegetables

Material density: 50 Lbs. per Cubic Foot

Conveyor System Capacity: 1000 Cubic feet per Hour

Duty: 24 Hours per Day, 7 Days per Week

Advantages Provided by KWS

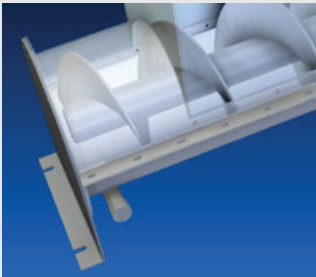
The customer wanted to replace their existing belt conveyor with an inclined screw conveyor. The belt conveyor had the disadvantages of product rolling off and being very difficult to keep clean. KWS engineers took into account the existing plant machinery and layout and the Customer's concerns, needs, and goals. Working together with the Customer KWS was able to provide a successful and effective conveying solution.

Special Features of KWS Design

KWS engineers designed a special inclined screw conveyor with an internal UHMW liner. The liner created a close clearance between the screw and the tubular housing so all of the food waste could be fully captured and conveyed with very little fallback. KWS designed the unit without a seal or bearing at the lower end making it completely enclosed and liquid tight. This design feature eliminated the constant maintenance and cleanup of juices and other materials that leaked out at the bottom of the previous unit. The entire product contact surfaces were constructed from 304 stainless steel and food grade plastics, which made them easy to clean..

"The KWS equipment looked great and exceeded our expectations."

Rob Bayliss – Plant Manager



Plant Name and Location
Converted Organics
Keasby, NJ



KWS Manufacturing
3041 Conveyor Drive
Burlleson, Texas 76028

Toll Free: (800) 543-6558
Phone: (817) 295-2247
Fax: (817) 447-8528

www.kwsmfg.com