



## Hanger Bearings for Screw Conveyors

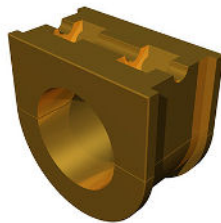
### Question

I have several screw conveyors in my plant conveying bulk materials to various areas for processing. Some of the screw conveyors have hanger bearings. What is a hanger bearing and what is their purpose?

### Answer

Hanger bearings are used to support screw sections at intervals along the length of a screw conveyor, preventing the screw from contacting the housing. A hanger bearing is a sleeve bearing, also known as a journal bearing, or plain bearing that allows a shaft to rotate against the smooth inner surface of the bearing. Sometimes, a lubricant, like oil or grease, is injected between the shaft and the bearing to reduce friction and wear.

The two most common styles of hanger bearings are 216 and 226 and are manufactured to CEMA dimensional standards. Bearings are interchangeable between CEMA approved screw conveyor manufacturers and KWS keeps hundreds of hanger bearings in stock for same-day shipment. Please refer to the KWS Screw Conveyor Component Guide or Engineering Guide for more information.



Hanger Bearings are Sleeve Bearings with Smooth Inner Surface



Style 216 Hanger Bearing with 216 Hanger Frame



Hanger Bearings Support Screw Sections in a Screw Conveyor



Hanger Bearings Support Screw Sections in a Screw Conveyor



### KWS Manufacturing

3041 Conveyor Drive  
Burlleson, Texas 76028

Toll Free: (800) 543-6558  
Phone: (817) 295-2247  
Fax: (817) 447-8528

[www.kwsmfg.com](http://www.kwsmfg.com)